

Apprentice Beekeeping Class

Getting Started



Beekeeping 101

To be a successful Beekeeper:

You can't just keep bees, you must understand how to raise bees!

Understand their habits, biology, housing needs, disease prevention, specific behaviors; all the necessary functions, requirements, and dynamics of a super organism.

A close-up photograph of a honeybee on a purple flower. The bee is positioned in the center-left of the frame, facing right. It has a fuzzy, golden-brown thorax and a striped abdomen. Its wings are partially spread, and its legs are visible as it interacts with the flower. The flower is a vibrant purple color with some white variegation. The background is a soft-focus green, suggesting other foliage. The overall lighting is bright and natural.

If You Are A Beekeeper, you are practicing animal husbandry!

Hive Location

Flight Path

Entrance Facing SOUTH

Maximize Sun on Hive Front

Especially important for winter survival

If it must face in another direction – go for it, but minimize the Northern exposure

Hive Stand

Cinder blocks

4x4s on cinder blocks

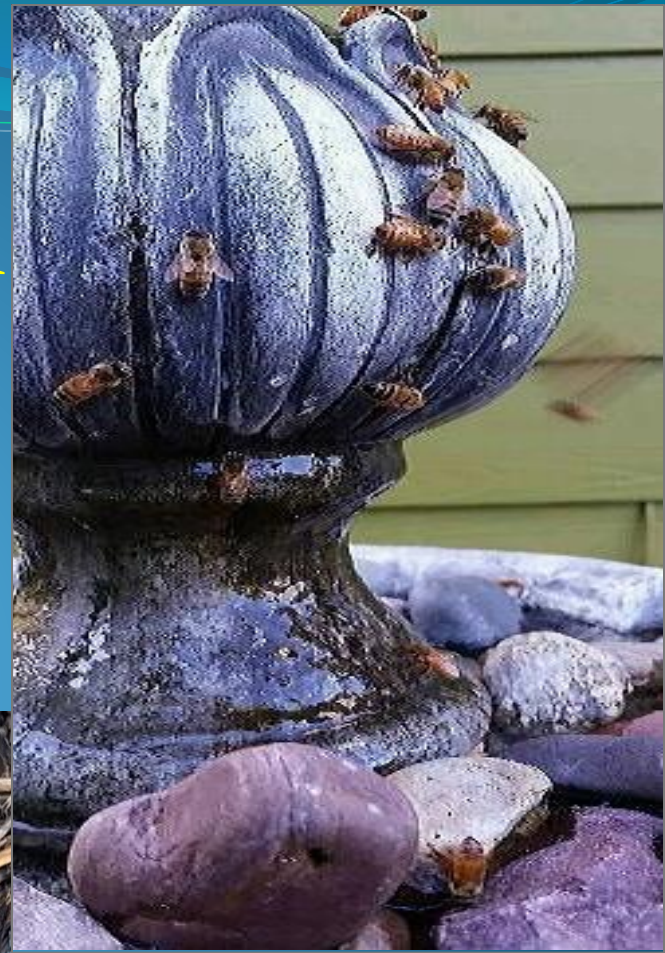
Pallets



Hives can be heavy. Each of these hives are ~ 300 lbs

Water for your bees

Bees cannot swim, they drown
Bees like the scent of chlorine
Bees like granite rocks
Bees like the moss on rocks
Bees like 'dirty' water; it is full
of minerals
and salts
that the
bees need



City Beekeeping/HOAs

Lots of rules



Tacoma Municipal Code

Chapter 5.24 APIARIES

- Sections:
- 5.24.010 Beekeeping – Maintenance of colonies – Nuisances designated.
 - 5.24.020 Enforcement and entry – Right of entry for inspection.
 - 5.24.030 Violation – Penalty.

5.24.010 Beekeeping – Maintenance of colonies – Nuisances designated.

A. It shall be the duty of any person having honey bees, *Apis Mellifera*, on his or her property to maintain each colony so as not to create a public nuisance.

B. Honey bee colonies shall, in addition, be maintained in the following condition:

1. All honey bee hives shall be registered with the Washington State Department of Agriculture as required by RCW 15.60.030.

Drifting



Note colors:

- * White or pastel colors = cooler internal temps in summer
- * Dark = heat retention



The main beehive structure is a tall, rectangular stack of wooden boxes. The top box is blue with yellow polka dots and a small illustration of a bee. The second box is white with blue polka dots. The third box is red and features a large black silhouette of a bee and a smaller yellow and black striped bee. The fourth box is yellow with black and red floral patterns. The entire structure is supported by four concrete blocks on a wooden base.

A smaller, two-tiered beehive structure is located to the right of the main structure. The top tier is light blue with the word "CAME" painted in red and green letters. The bottom tier is light green. It is supported by a blue wooden base.



Bee Forage



Bee Forage



Bees and their Hives

Bee Space: 3/8”

Comb is King

Propolis (Bee Glue)



Hive = 2 Deeps w/all Frames “drawn out”

**Hive ‘Winter Ready’ must have 80 lbs
honey (upper deep completely full of capped
frames)**

Do's and Dont's

Bee scent vs. perfume

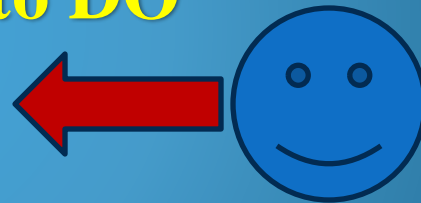
Dress for success

Don't look like a BEAR

Don't breath on the Bees (CO2)

Look, Listen, then decide what to DO

When in doubt do nothing !

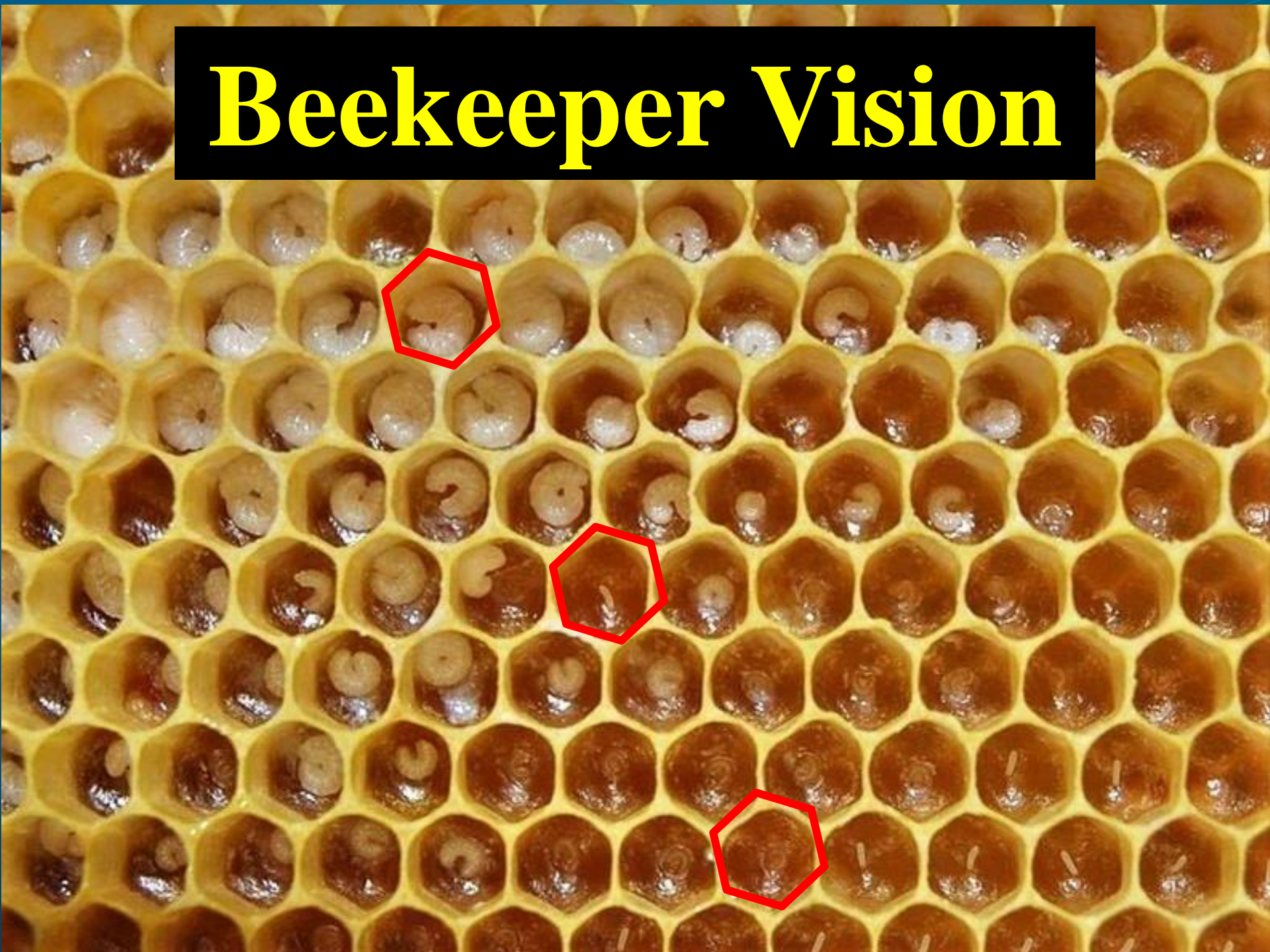


Ask !

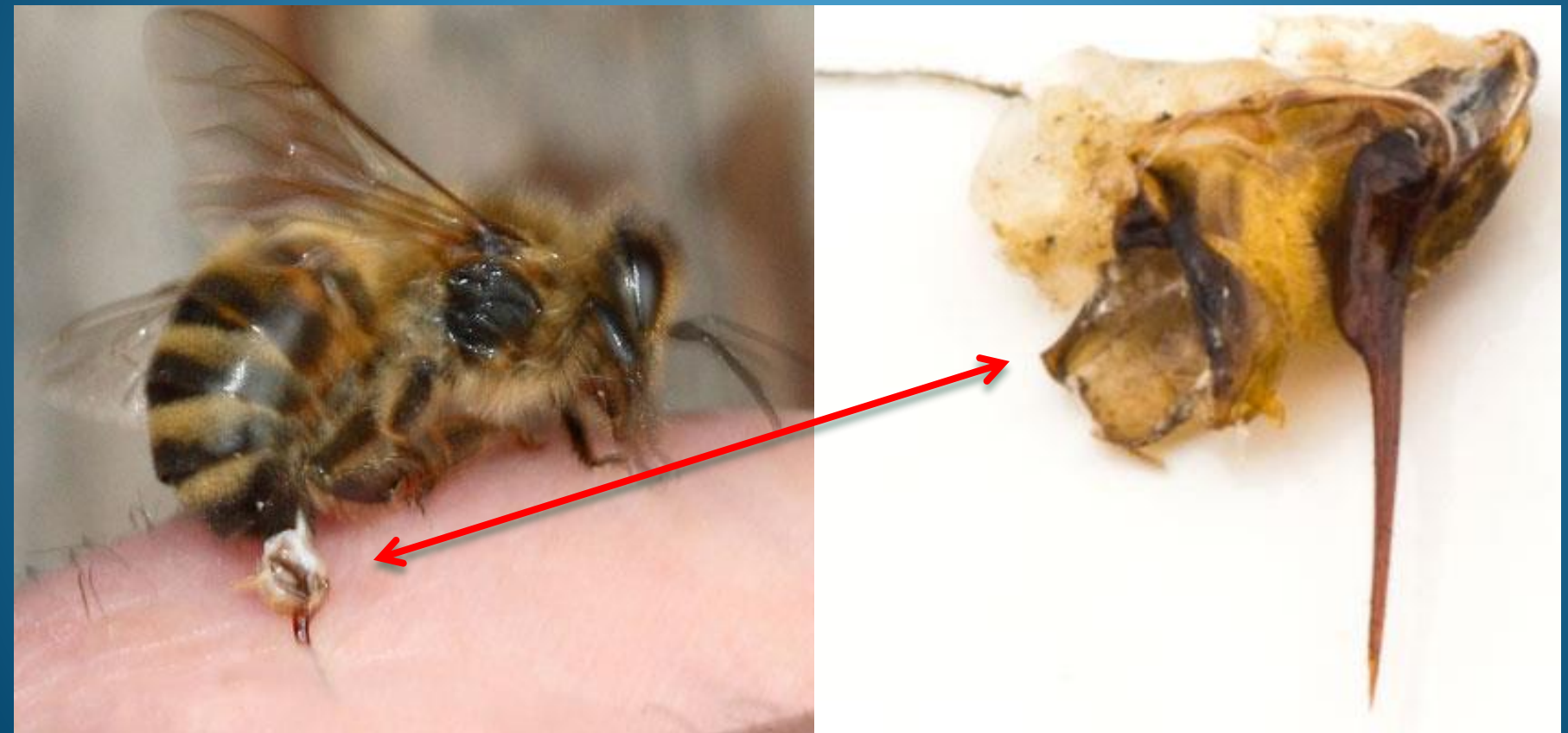
Network: * Mentor * Monthly Meetings * Weekly videos

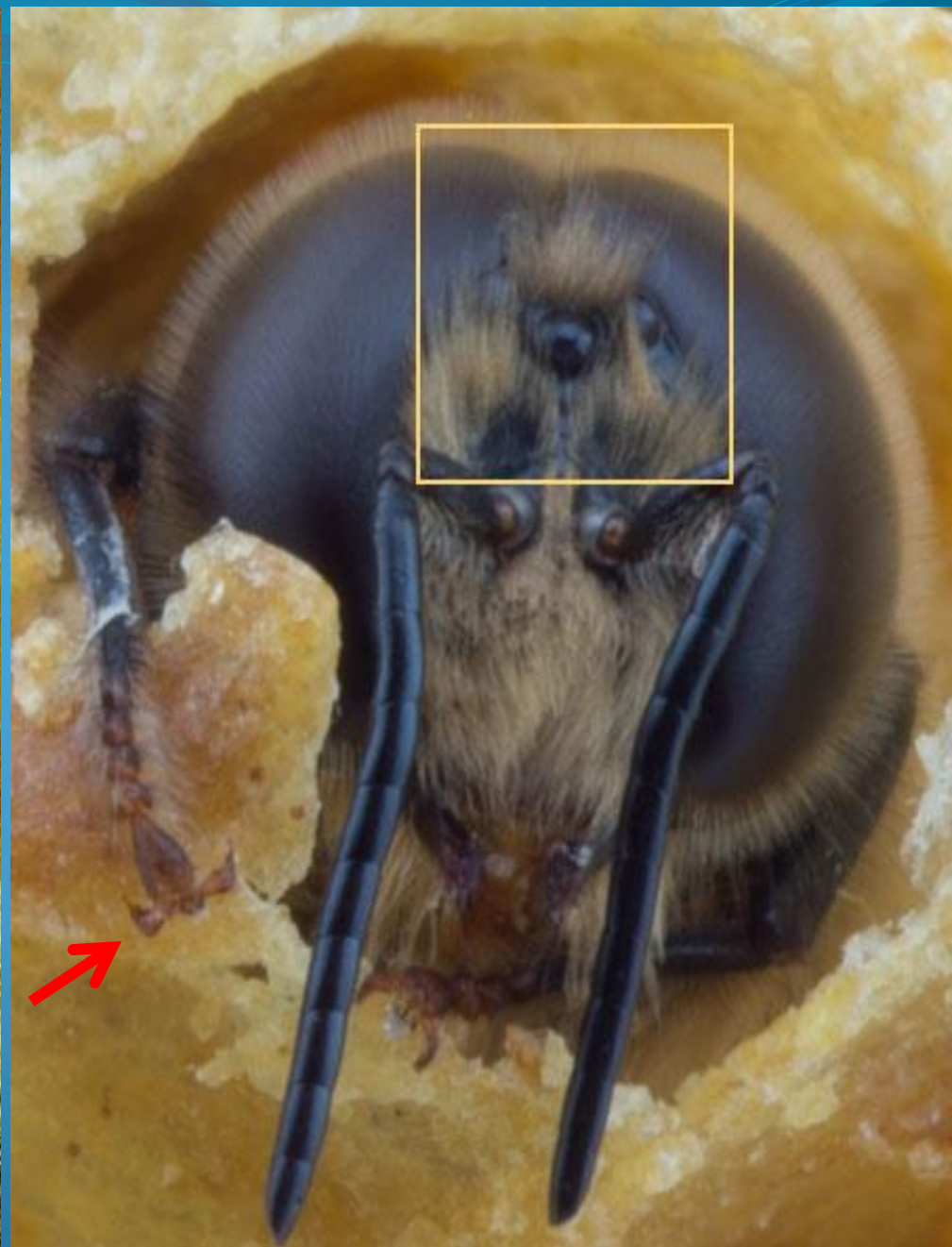
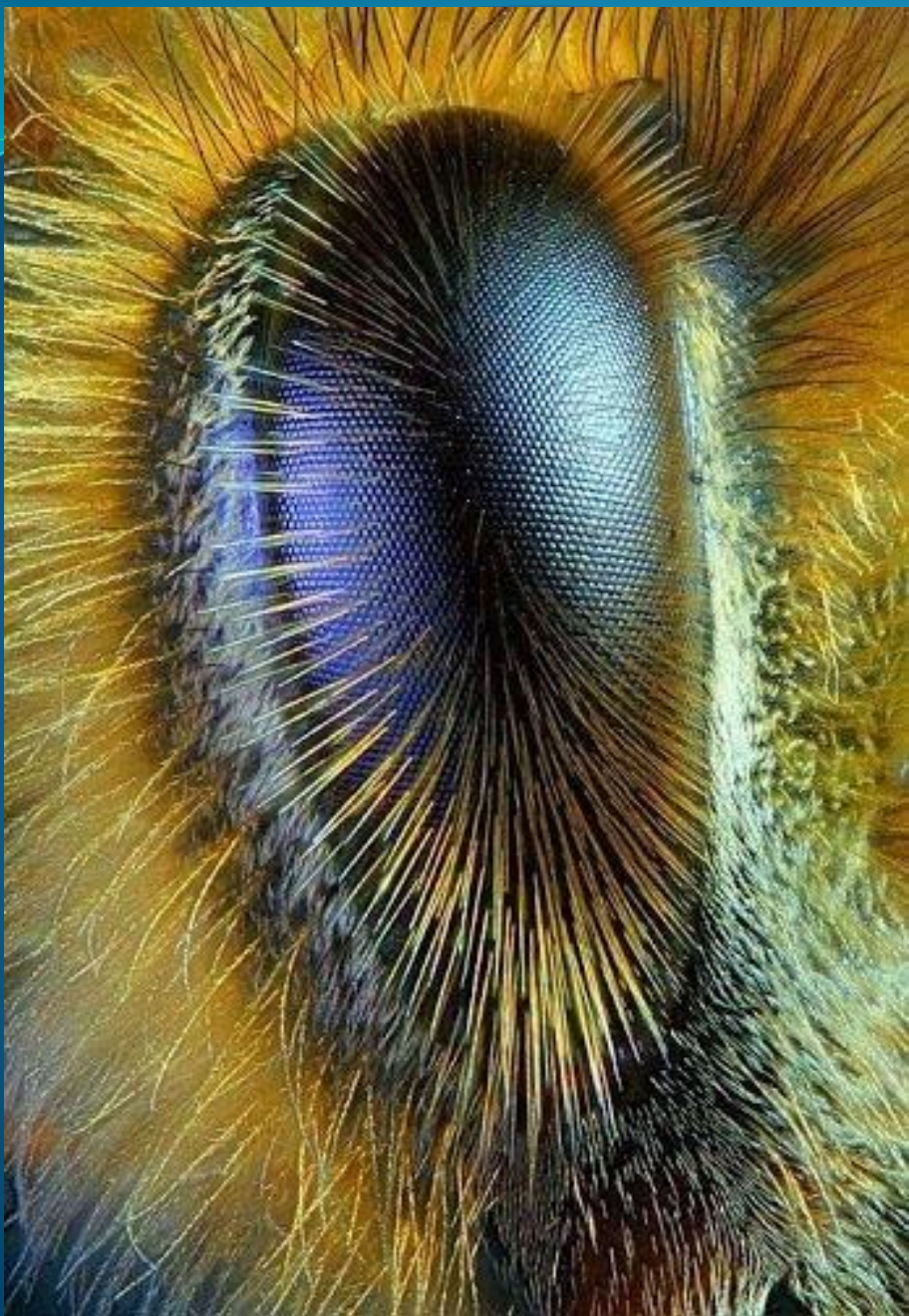
Don't believe everything you read on the internet!!!

Beekeeper Vision



Honeybees & Their Stingers





Package Bees

- 3 lbs = ~ 10,500 bees, one queen
- Less parasites and bee hive diseases
- Workers are not queens daughters



Five Frame Nuc (Nucleus hive)

- 4-5 Frames of brood, one queen (may be caged)
- Unknown amount of parasites & diseases
- *Will Need Mite Treatments*
- **Buyer Beware !!!**



Package Installation Video

Package Installation Class with Handout
Package Day
Extension Office/Fair grounds

<https://youtu.be/Oppqpvu6-cs>