

# INLAND EMPIRE BEEKEEPERS ASSOCIATION

## Equipment & Tools of the Trade



**Association Hives**



# Hive Language

Bee Suit

Deep

Super

Inner Cover

Telescoping Cover

Commercial Tops

Screen Bottom Board

Frames

Foundation

Feeder



# Solid Bottom Board And Hive Stand

- Solid bottom board
- Easy to make
- Note 5/16 inch spacer
- Mice prevention
- **Hive Stand**
- Two concrete blocks
- With 4x4 posts
- Pallets



## Screened Bottom Board

- Removable metal tray
- Ventilation and mite control
- Grid paper / mite count



# Screened Bottom Board



# Brood Chamber

- 9 1/8 " Deep
- Also called
- Deep
- Deep Super
- Note Cleat



# Deep Frame

- Undrawn Deep Frame
- Size 9 1/8"



## Installed Deep Frames

- Nine Frames
- Slot for Feeder



# Feeder



## Feeder & Stick

- Helps bees from drowning
- Screen



## Feeder Installed

- Feed Sugar water
- 1 to 1 mix
- Feed warm



## Inner Cover

- Note notch



# Inner Cover

Notch



## Inner Cover Installed

- Notch to Front & Down



# Telescoping Lid

- Keeps Water out



# Telescoping Lid

- Installed



## Second Brood Box

- Repeat process
- Feed 1 to 1 syrup



## Second Brood Box Installed



## Inner Cover Installed

- Continue to Feed
- Install telescoping lid

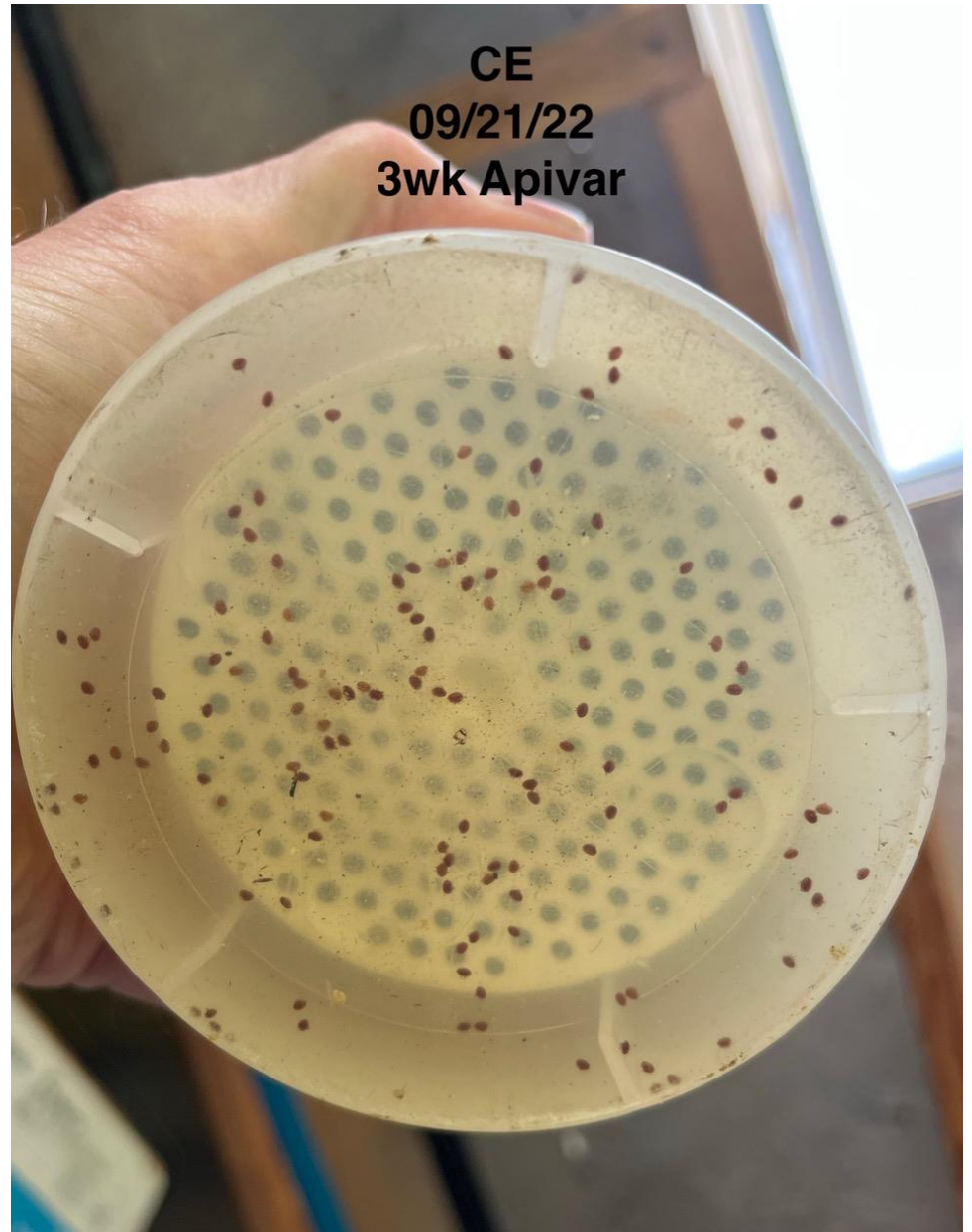


# Smoker

- Safety First
- Wine Cork



# Varroa Mite Sampler



# Hive Tool



# Bee Brush



# Clothing

- Jacket with Hood



# Proper fit



# Hive Language

**Bee Suit**

**Deep**

**Super**

**Inner Cover**

**Telescoping Cover**

**Commercial Tops**

**Screen Bottom Board**

**Frames**

**Foundation**

**Feeder**

