

INLAND EMPIRE BEEKEEPER'S ASSOCIATION

APPRENTICE BEEKEEPING CLASS

A close-up photograph of a honeybee on a purple flower. The bee is positioned in the center of the frame, facing downwards. Its body is a mix of yellow and brown, with its wings and antennae clearly visible. The flower it is on has many small, delicate purple petals. In the background, there are more purple flowers and green foliage, all slightly out of focus. The overall lighting is bright, highlighting the textures of the bee and the flower.

Summer Management

Summer Management

Best time of the year for Bees and Beekeepers

**Summer Management: usually late
June through Aug**



Summer Management Topics

- **Hive Buildup**
- **Superring**
- **End of Swarm Season**
- **Honey Flow**
- **Flow Fluctuations**
- **Mite Levels**
- **Disease Detection**
- **Fall Preparation**



Hive Buildup



**Add 1 or 2 Western Supers
or 3rd Deep**

**Dependent on abundance of
pollen and nectar**

Goal: 22/18 drawn frames

10+ frames of honey (80 lbs)

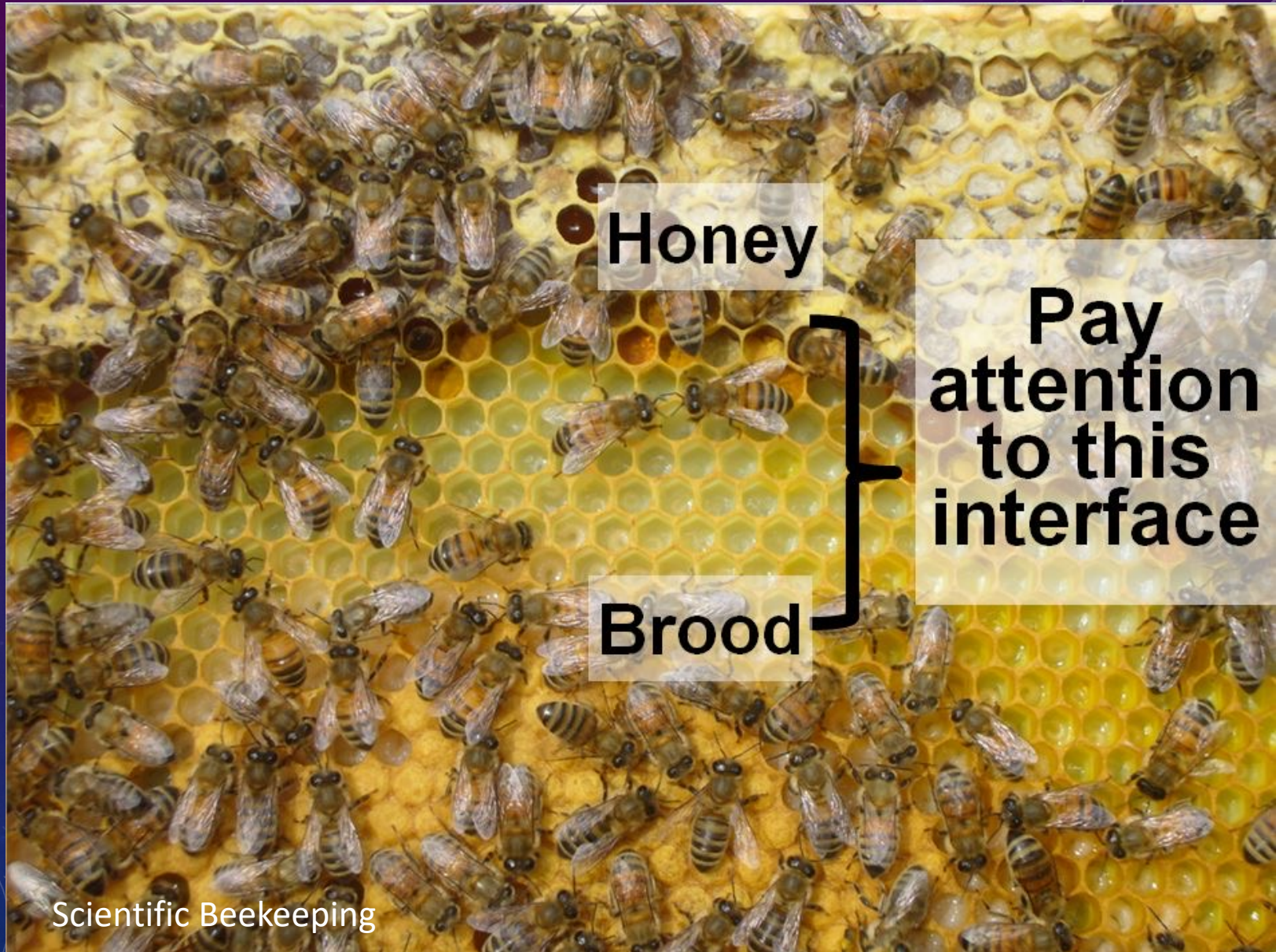
Honey Bank - 2 full frames



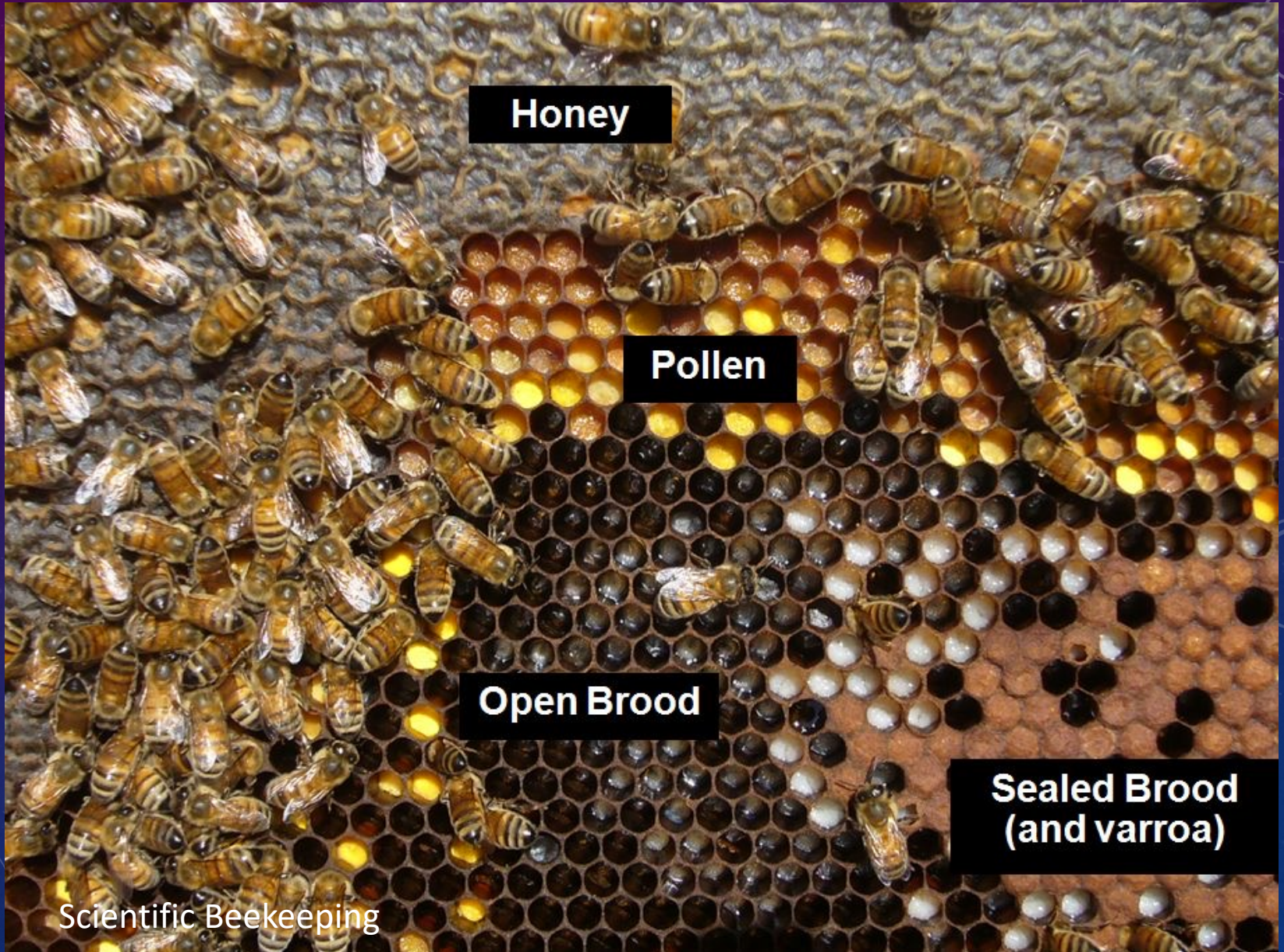
READING YOUR COMBS

1. Queen Right
2. Swarming Instinct vs Supersedure
3. Mite Monitoring and Control

READING YOUR COMBS



READING YOUR COMBS



QUEEN RIGHT



Scientific Beekeeping

QUEEN RIGHT



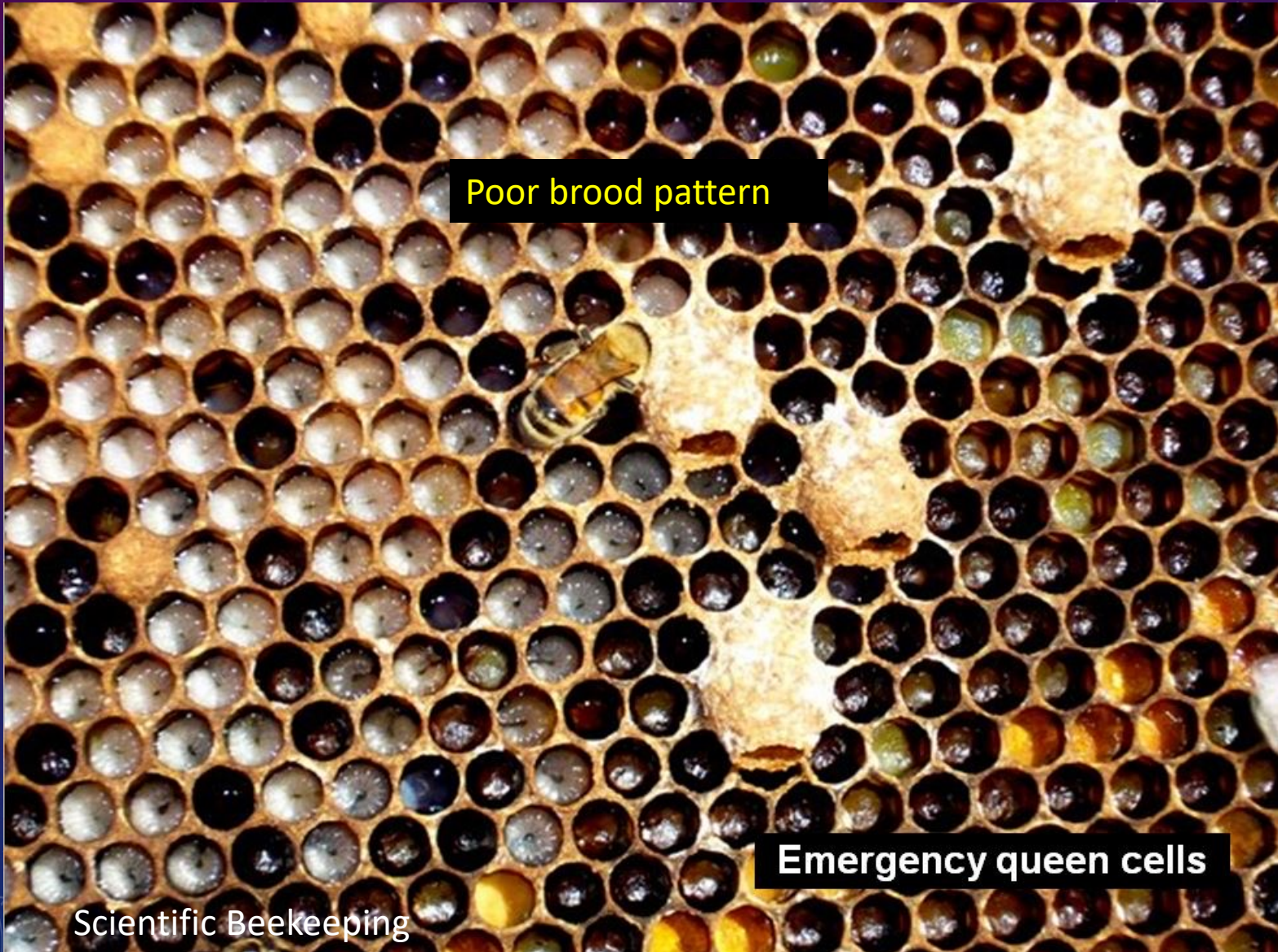
Older to Younger Brood

QUEEN RIGHT



Solid Brood Pattern

QUEEN RIGHT

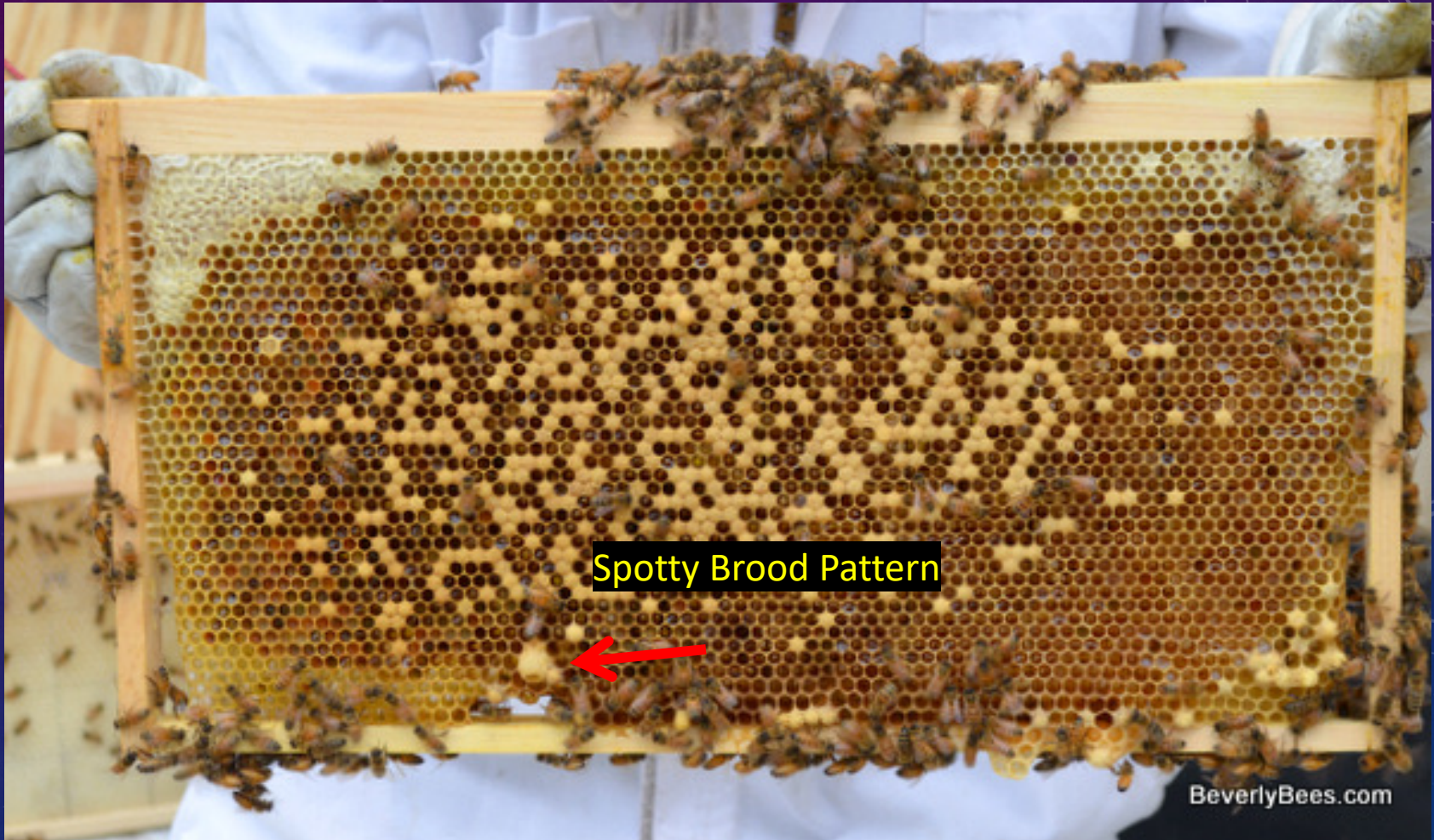


Poor brood pattern

Emergency queen cells

Scientific Beekeeping

QUEEN RIGHT



SWARMING INSTINCT



SWARMING INSTINCT



Scientific Beekeeping

Orientation Flights

- Young bees learning the hive location for later foraging activities
- Usually between 2:00 and 4:00 pm on sunny afternoons
- Indicates a strong, healthy hive with a good queen



End of Swarm Season

Varies:

**Location and Weather dependent
Swarm vs. Abscond**

**After Swarm Season - life is good for
beekeepers. Just try to keep up w/bees**

Prepare for Honey Flow – Supering

Supering depends on _ _ _

Honey Flow Fluctuations & Supering

Location

Nectar & Pollen Sources

Weather (Mother Nature)

Rainfall

Temperatures

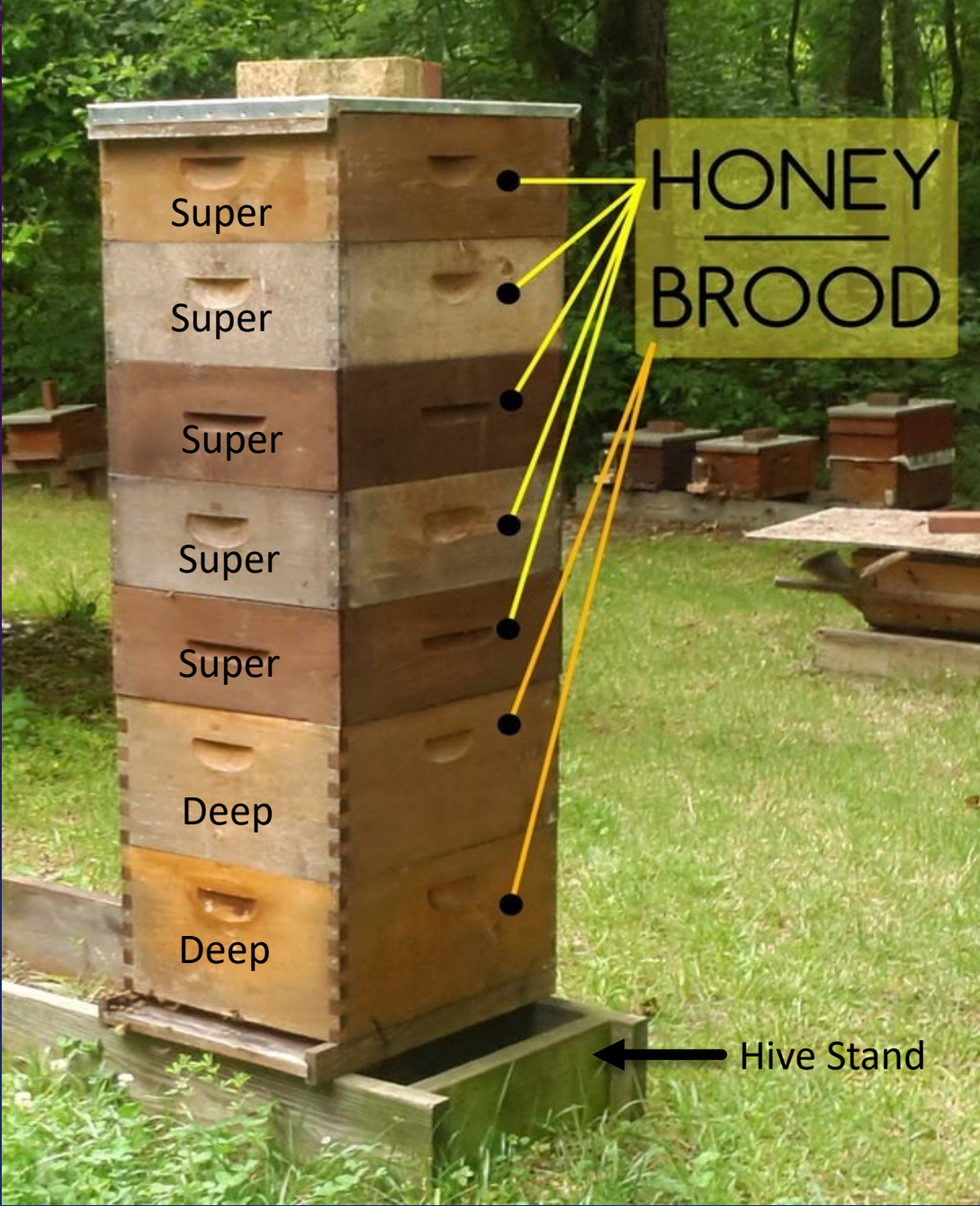
Smoke

Hive Health

Mite Load

Disease, Parasite & Predator Levels

Supering



End of Summer into Fall Prep

Fall: The Hive's Most Important Season
Mid-August for Eastern Washington
Might Last into early November

Mite Load is Key

Hive Production of Fall Bees (Fat Bees)

Storage of Adequate Amounts of Honey and Pollen

80 lbs of honey per hive, more for Italians

Feeding may be Necessary

Mite Samples

We will sample **IEBA** hives during all Field Days

We will teach alcohol wash test. Video is available

You will need to sample your hive once a month (May – Oct). More often if mite counts are high.

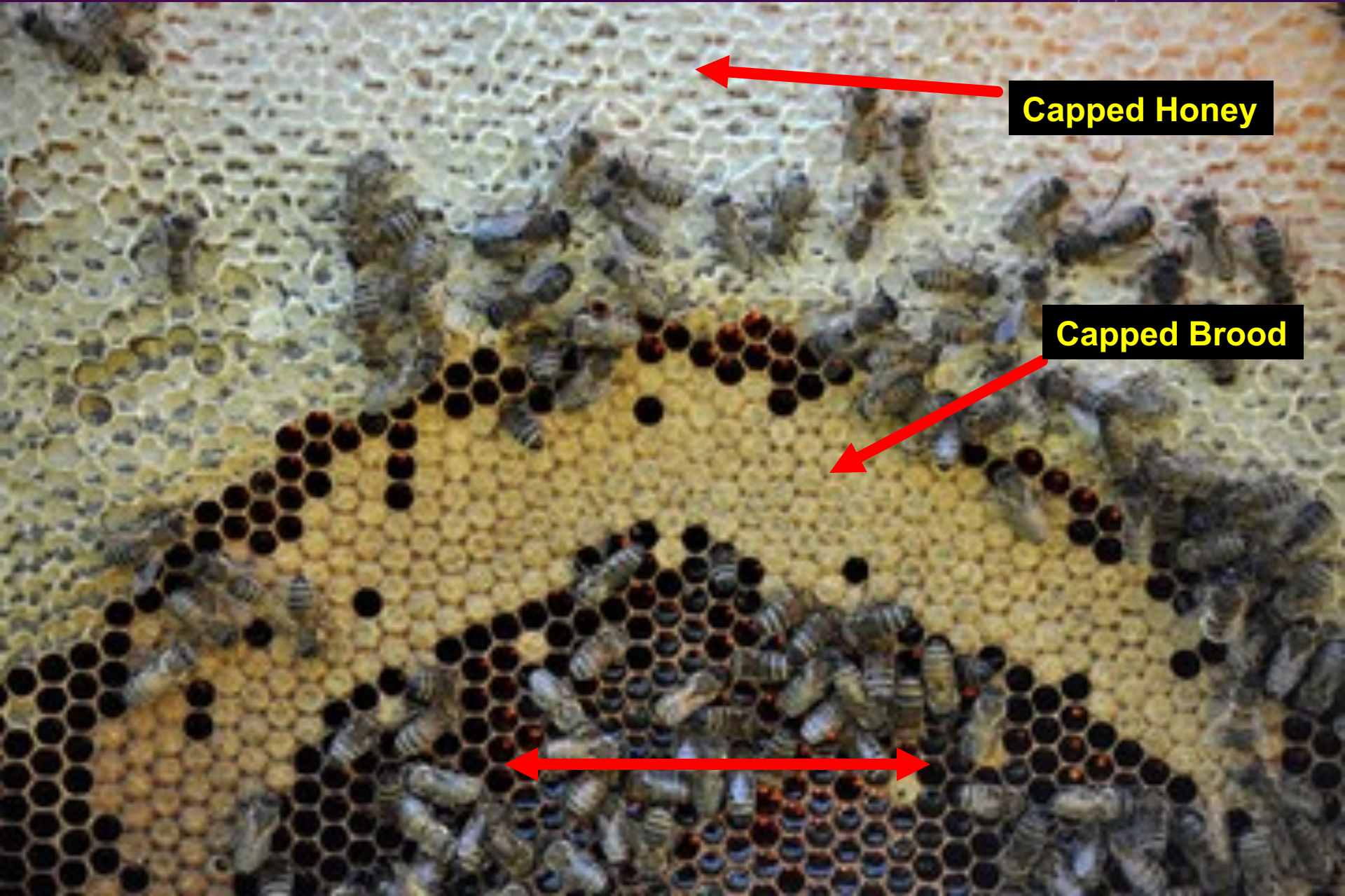


TREATMENT VS. NO TREATMENT

Research confirms mite-infested and diseased bees will fly over 2 miles and re-infest new healthy colonies thereby spreading the virus infection and mite infestation

If **you** do not control **your mites**, you are responsible for killing your bees and also your **neighbors'** bees.

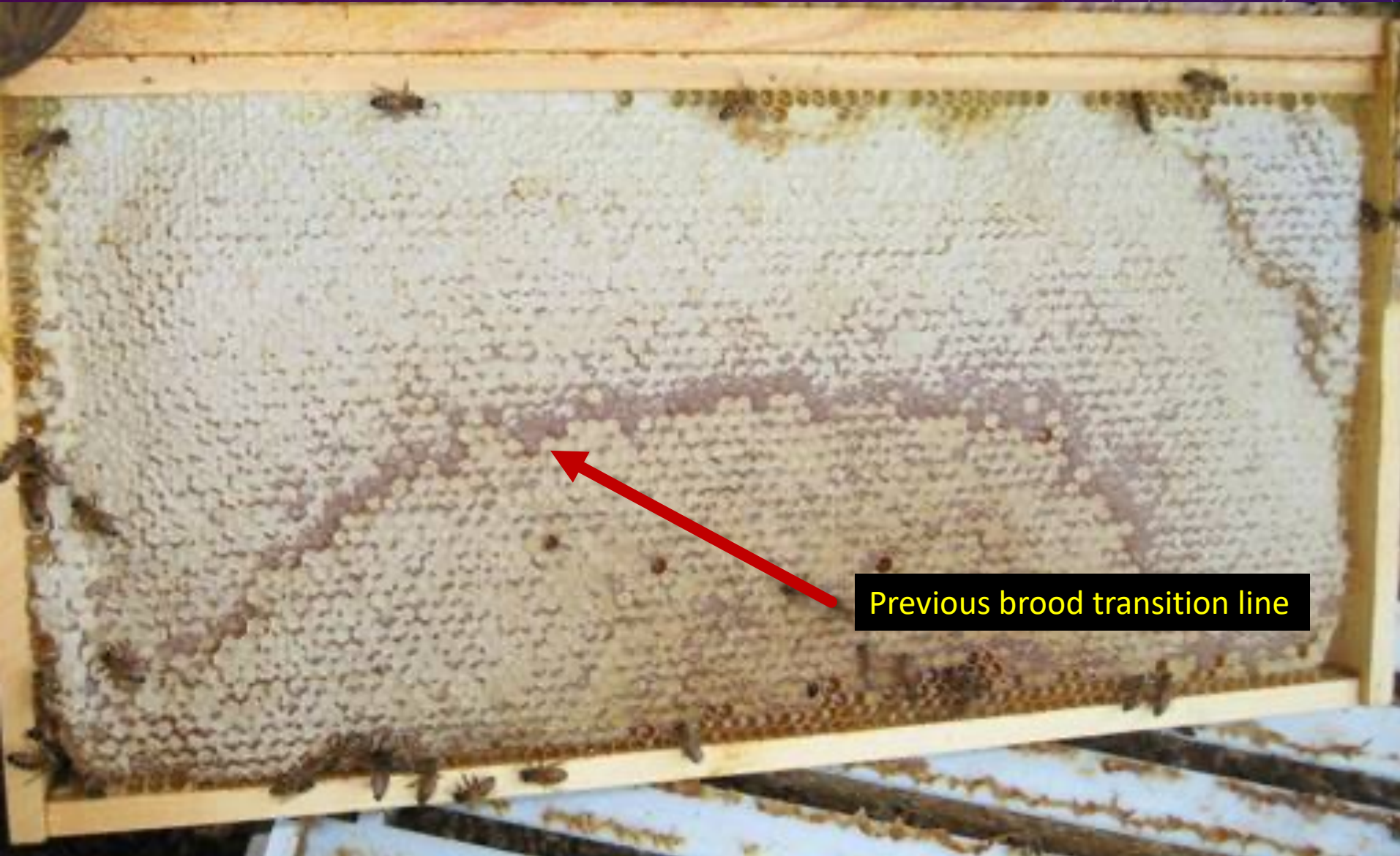
Late Summer & Fall Bee Population Decrease



Capped Honey

Capped Brood

Late Summer & Fall Bee Population Decrease



Previous brood transition line

Two vs. One Hive

Advantages:

Compare – Contrast

Plus-up weaker hive w/brood

If Queenless add frame of eggs

Two Regular Hives

Shared Wall for Heat

Beekeeper Insurance:

With Two Hives You Have Options

With One Hive You Do Not

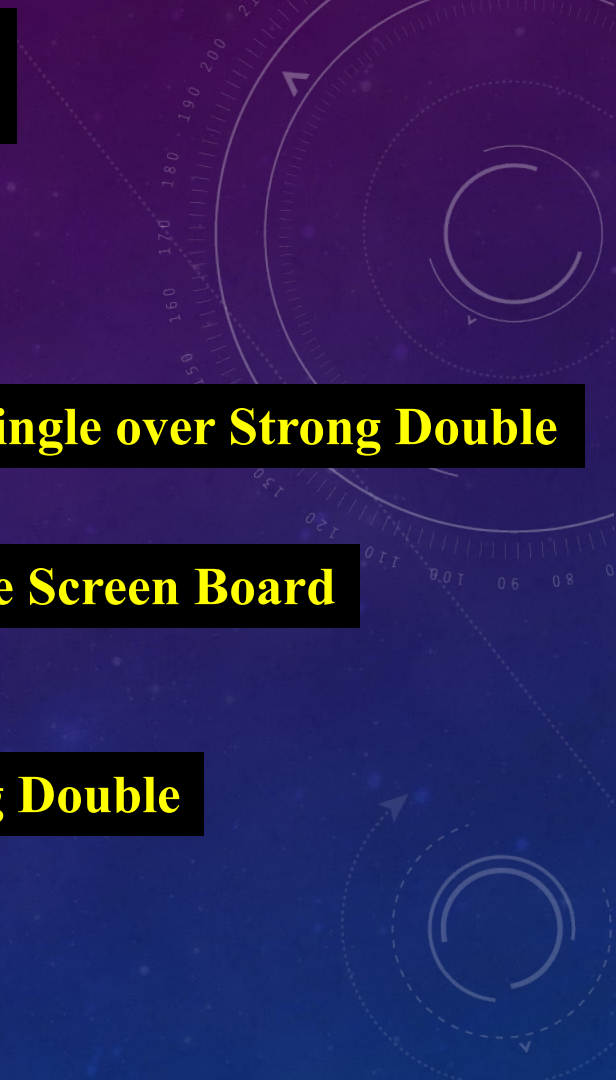
Two vs. One Hive



Weak Single over Strong Double

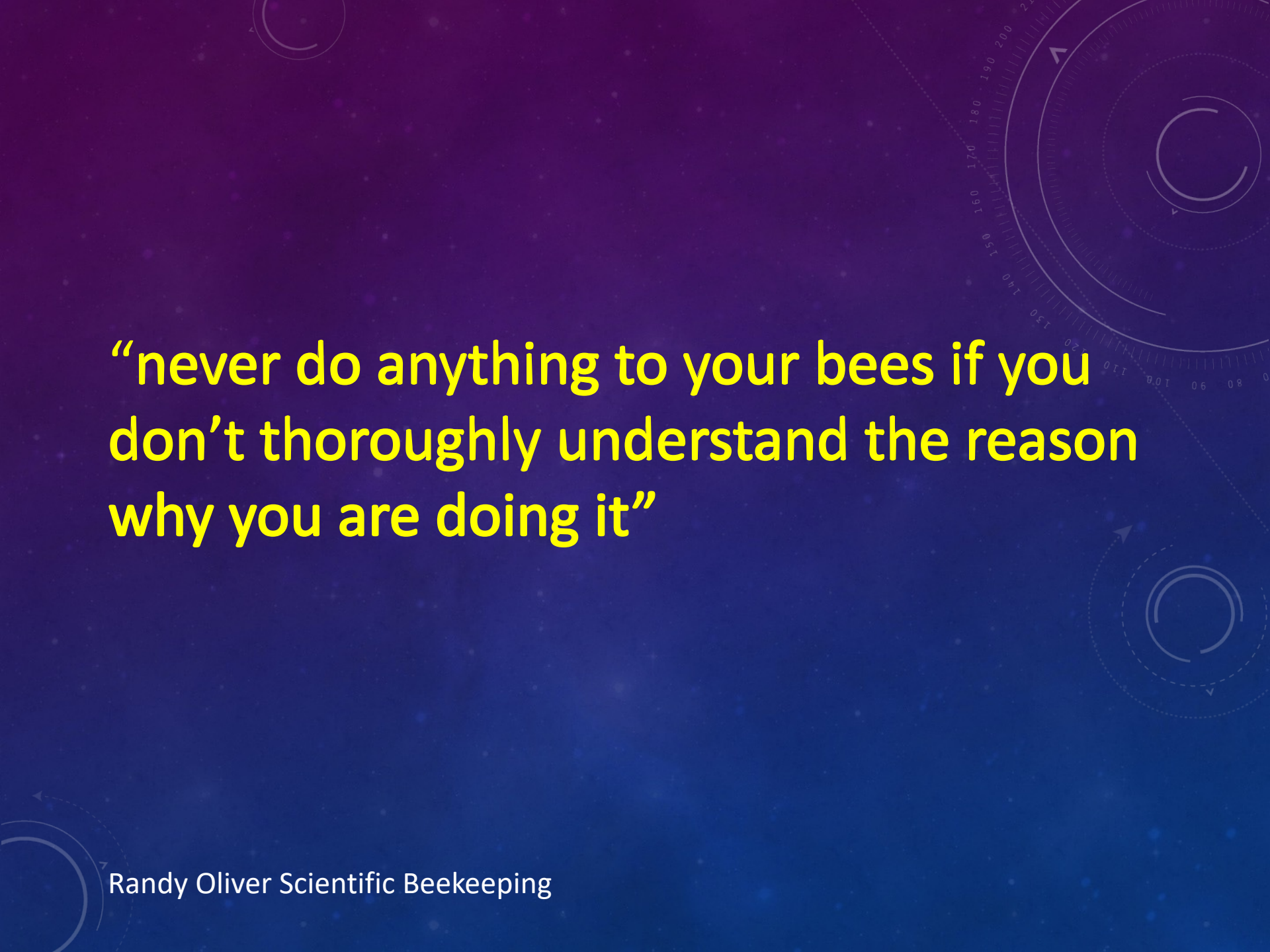
Double Screen Board

Strong Double



Networking Opportunities

- Attend monthly meetings
- Find a mentor
- Watch the IEBA videos outlining new colony growth and colony management
- Read your copy of “The Bee Book”
- Beware of unproven anecdotal advice on the internet
- Do your own Research on topics of interest
 - Hive and the Honeybee (Dadant Publications)
 - ABC and XYZ of Bee Culture (A.I. Root Library)
 - First Lessons in Beekeeping (Dadant Publications)

The background is a dark blue gradient with a starry space pattern. In the upper right and lower right corners, there are technical diagrams consisting of concentric circles, dashed lines, and arrows, resembling a circular scale or a technical drawing. The text is centered in the middle of the image.

“never do anything to your bees if you don’t thoroughly understand the reason why you are doing it”